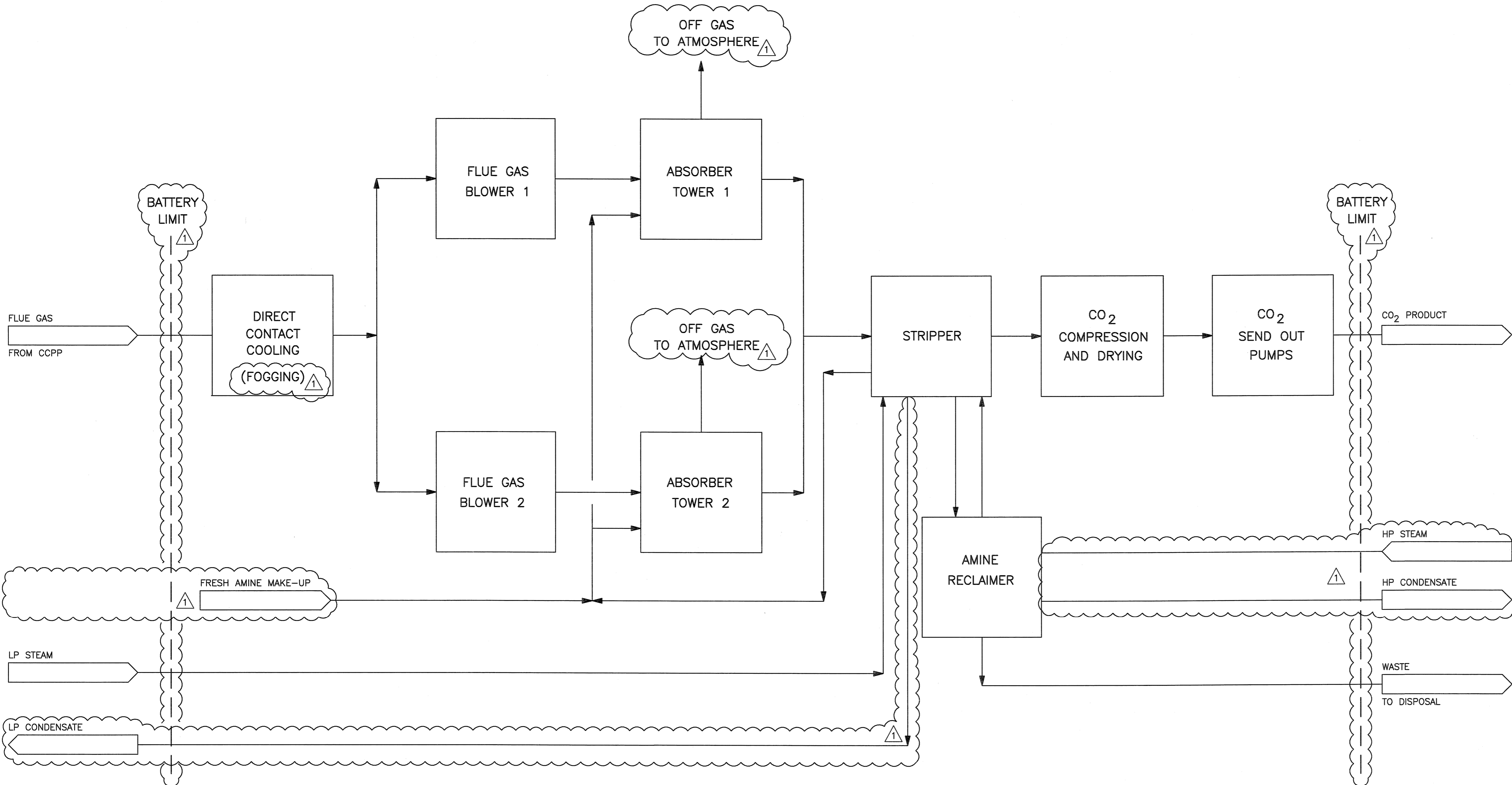


©Bechtel Corporation 2008. All rights reserved. Bechtel, Confidential, Contains information that is confidential and proprietary to Bechtel and may not be used, reproduced, or disclosed in any format without Bechtel's prior written permission. This document is prepared exclusively for Gassnova in connection with the preparation of the FEED study for the CO2 Capture Facility at Karsto, Norway, and is not to be relied upon by others or used in connection with any other project.

1 2 3 4 5 6 7 8 9 10 11 12 13 14 15 16

NOTES:
1.



12	RE-ISSUED FOR APPROVAL	DM	GR	-	RS	20	10/10/08
0	ISSUED FOR APPROVAL	GR	DM	-	RS	-	10/10/08
NO.	DATE	BY	CHK	DES	ENGR	PROJ	APPR
GASSNOVA		CO2 KARSTO PROJECT					
10112936-PB-P-FLD-0001		BLOCK FLOW DIAGRAM					
BECHTEL POWER CORPORATION		Sheet Size: 594x841 "A1"	Scale: N.T.S.				
FREDERICK, MARYLAND		JOB NO.	DRAWING NO.		REV.		
		25474	000-M5-YA-00001		1		

1 2 3 4 5 6 7 8 9 10 11 12 13 14 15 16

M
L
K
J
H
G
F
E
D
C
B
A

M
L
K
J
H
G
F
E
D
C
B
A