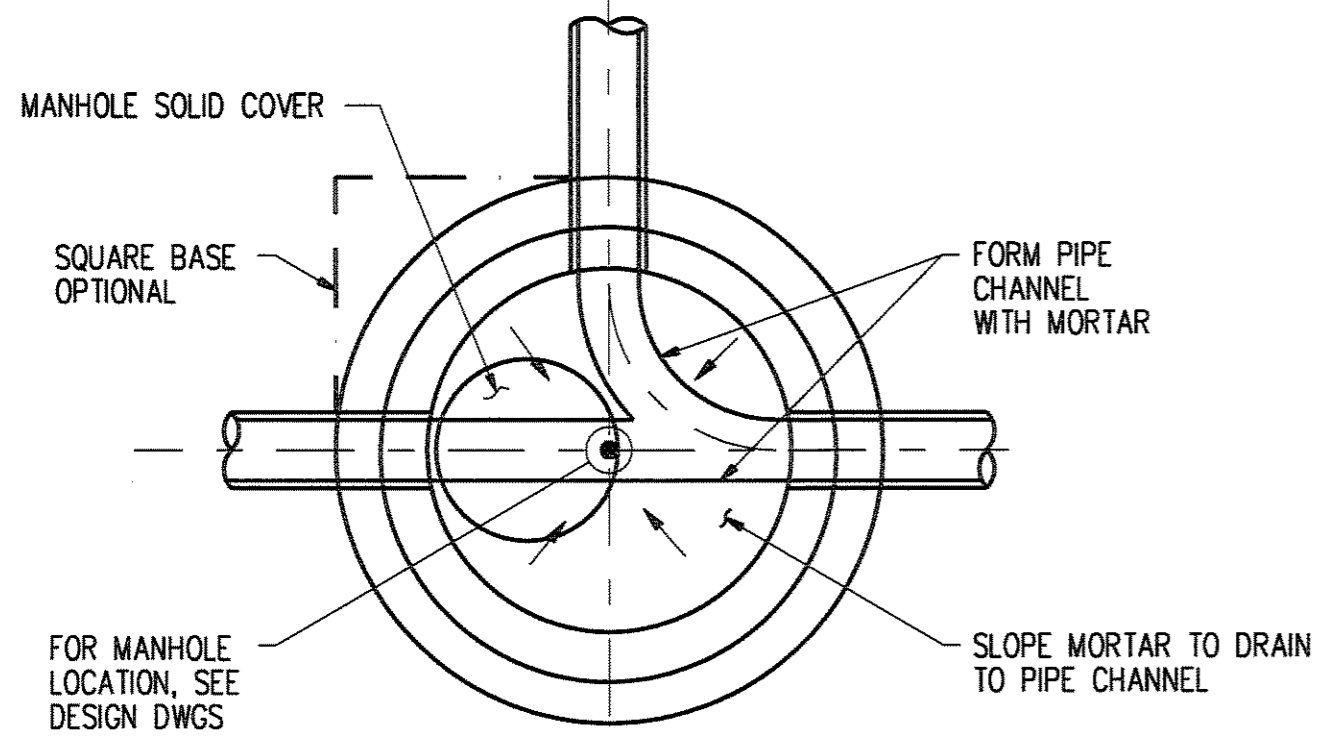
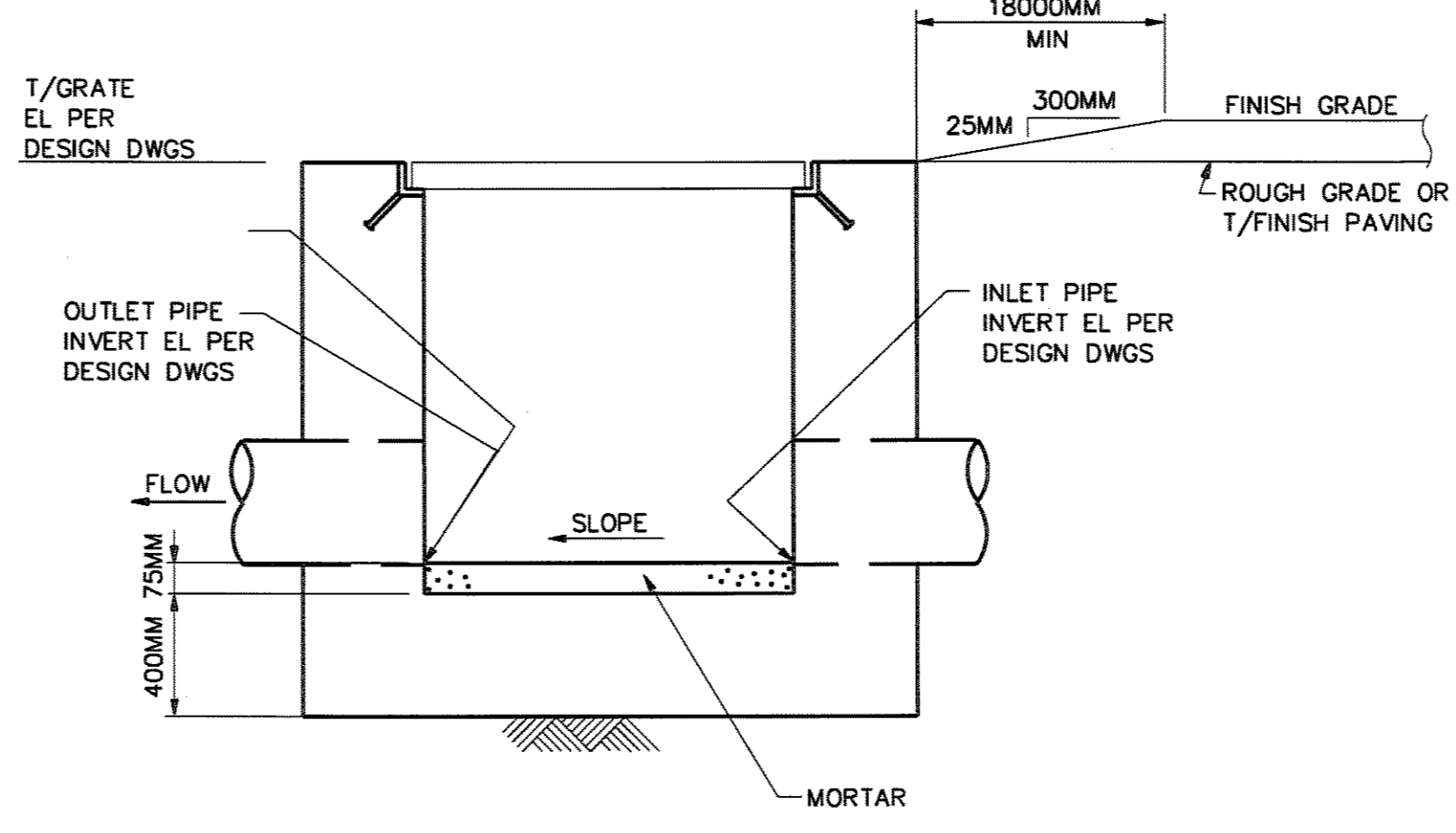


©Bechtel Corporation 2008. All rights reserved. Bechtel Confidential. Contains information that is confidential and proprietary to Bechtel and may not be used, reproduced, or disclosed in any format without Bechtel's prior written permission. This document is prepared exclusively for Gassnova in connection with the preparation of the FEED study for the CO2 Capture Facility at Karsto, Norway, and is not to be relied upon by others or used in connection with any other project.



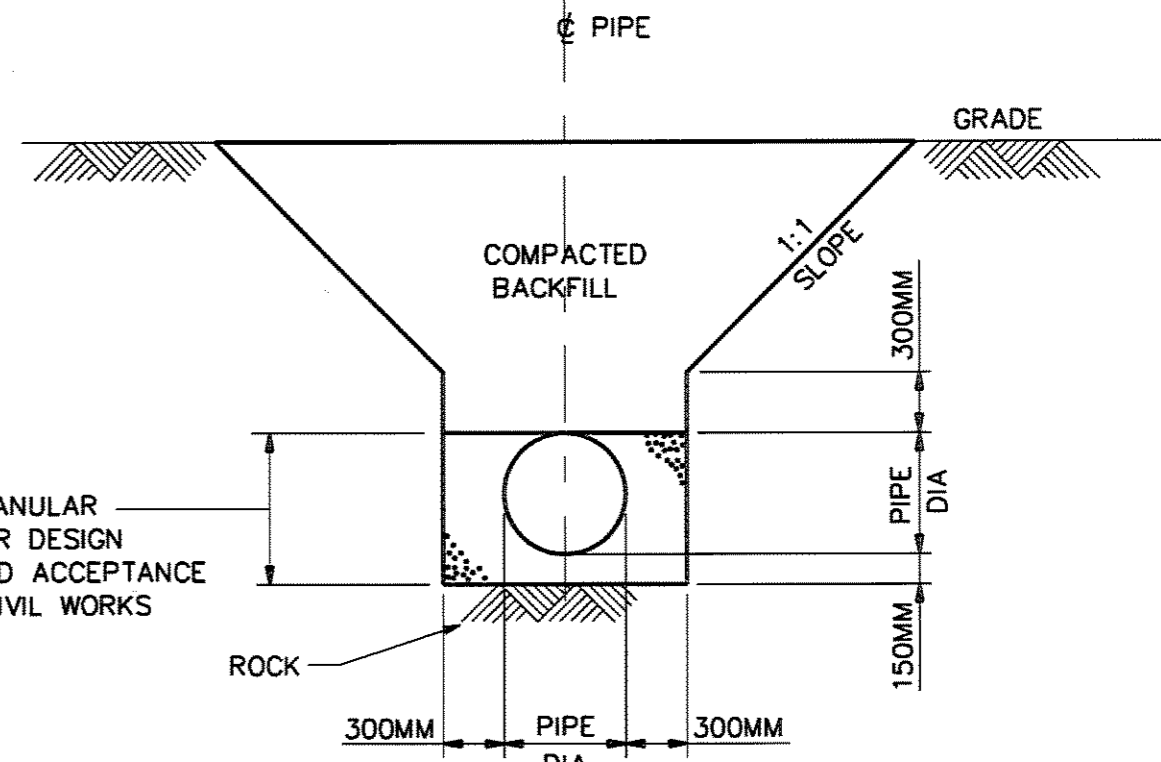
MANHOLE - PLAN VIEW
NTS

DETAIL 1



EXCAVATION & BACKFILL DETAIL

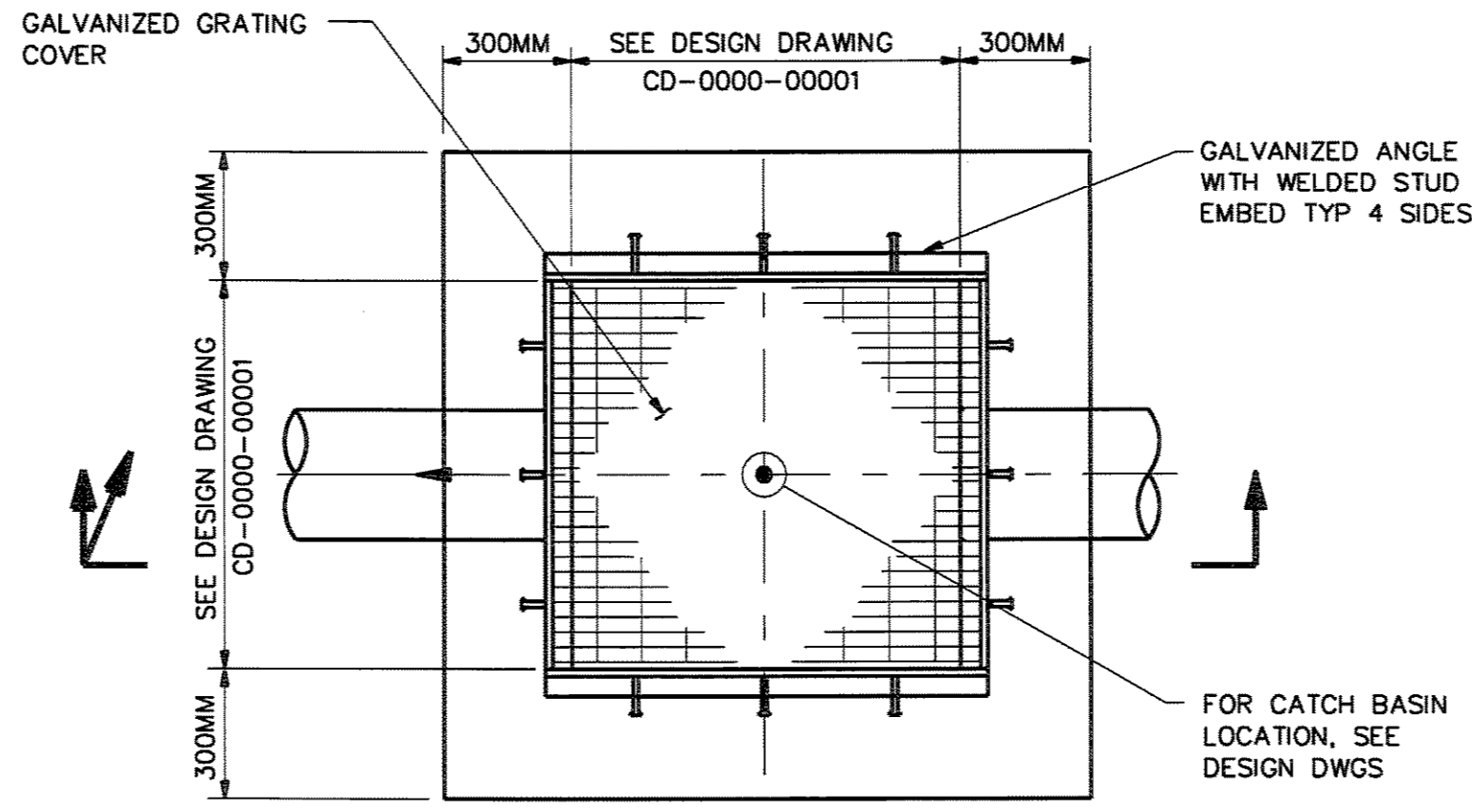
DETAIL 3



COMPACTED GRANULAR MATERIAL - PER DESIGN PHILOSOPHY AND ACCEPTANCE CRITERIA FOR CIVIL WORKS

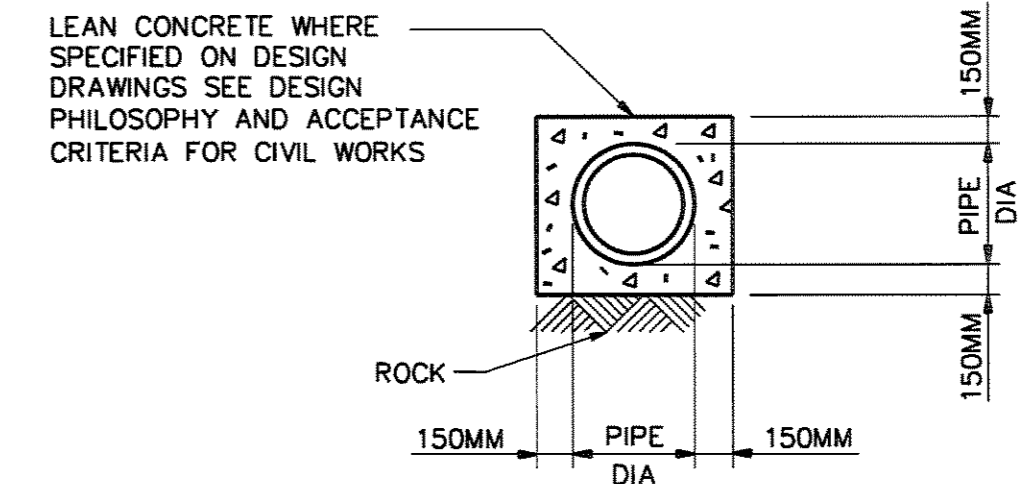
EXCAVATION & BACKFILL DETAIL

DETAIL 3



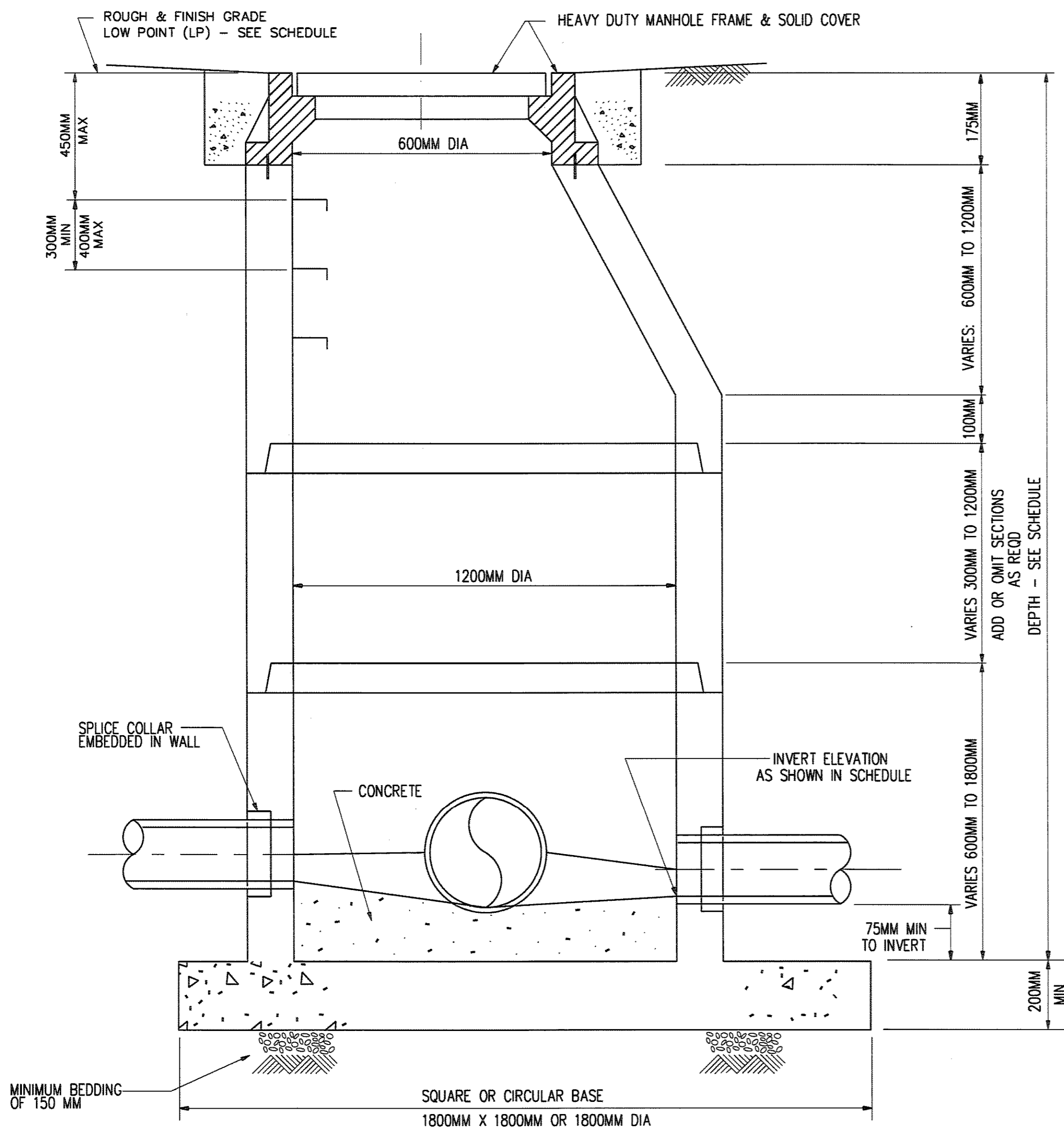
CATCH BASIN PLAN

DETAIL 2



LEAN CONCRETE COVER DETAIL

DETAIL 4



PRECAST 600MM DIAMETER CONCRETE MANHOLE SECTION

FOR 300MM DIA TO 600MM DIA PIPE
NTS

FOR GENERAL NOTES SEE DRAWING CY-0000-00001.

NO.	DATE	REVISIONS	BY	CHK	DES	ENGR	PRG	APPR
0		ISSUED FOR COMMENT	RS					

 GASSNOVA Owner Drawing No. 10112636-PB-C-TE0-0015	CO2 KARSTO PROJECT UNDERGROUND STRUCTURES TYPICAL SECTIONS & DETAILS (SHEET 2 OF 2)
 BECHTEL POWER CORPORATION FREDERICK, MARYLAND	SHEET SIZE: 594 x 841 "A1" SCALE: 1:50 JOB NO. 25474-000 DRAWING NO. CY-0000-00003 REV. 0