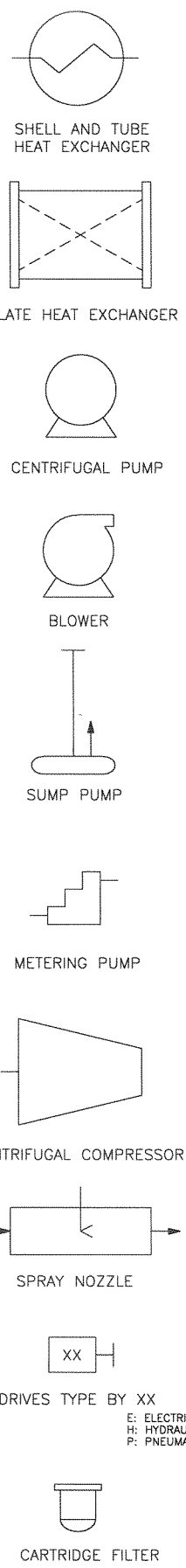
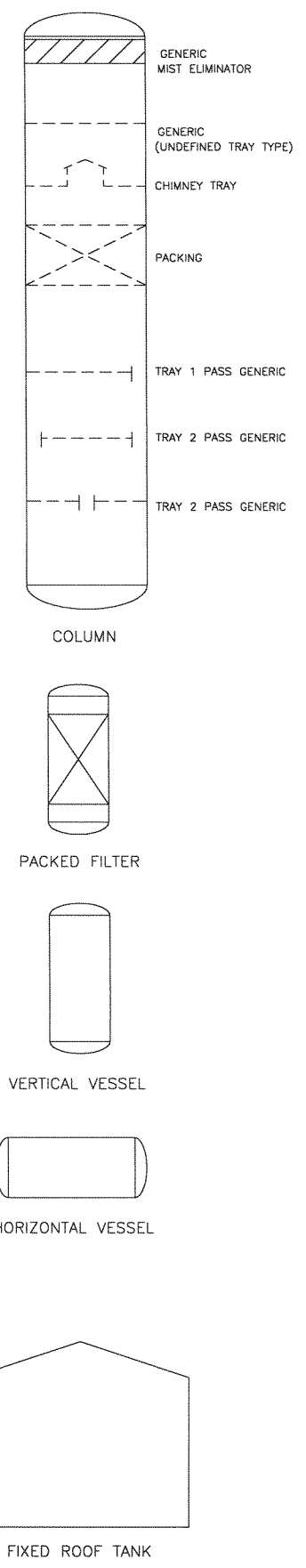


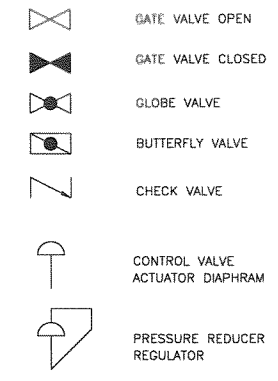
©Bechtel Corporation 2008. All rights reserved. Bechtel Confidential. Contains information that is confidential and proprietary to Bechtel and may not be used, reproduced or disclosed in any form without Bechtel's prior written permission. This document is prepared exclusively for Gassnova in connection with the preparation of the FEED study for the CO2 Capture Facility at Karsto, Norway, and is not to be relied upon by others or used in connection with any other project.

1 2 3 4 5 6 7 8 9 10 11 12 13 14 15 16

EQUIPMENT SYMBOLS



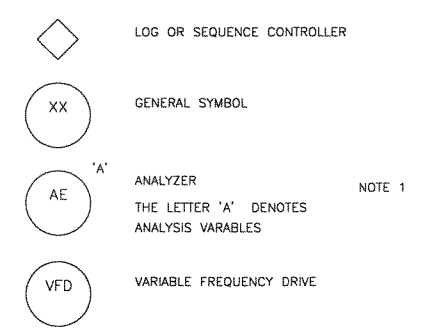
VALVES



FLUID CODES

- FG - FLUE GAS
- LP - LOW PRESSURE STEAM
- MP - MEDIUM PRESSURE STEAM
- SCW - SEA COOLING WATER
- BFW - BOILING FEED WATER
- PW - PROCESS WATER
- CCW - CLOSED COOLING WATER

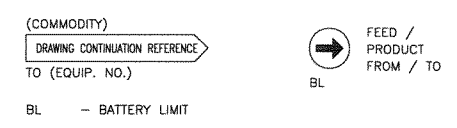
INSTRUMENTS



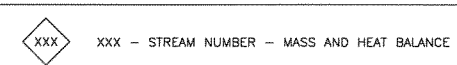
EQUIPMENT IDENTIFICATION LETTERS

- E - EXCHANGERS
- F - FILTERS
- K - COMPRESSORS AND BLOWERS
- P - PUMPS
- T - COLUMNS
- TK - TANKS
- V - VESSELS
- X - MISCELLANEOUS/VENDOR PACKAGE

OFF-PAGE CONTROLLER



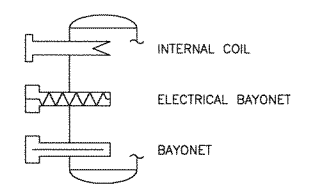
STREAM NUMBER



INSTRUMENT IDENTIFICATION LETTERS

FIRST LETTERS		SUCCEEDING LETTERS			
	MEASURED OR INITIATING VARIABLE	MODIFIER	READOUT OR PASSIVE FUNCTION	OUTPUT FUNCTION	MODIFIER
A	ANALYSIS		ALARM		
B	BURNER/COMBUSTION		USER'S CHOICE	USER'S CHOICE	USER'S CHOICE
C	CONDUCTIVITY (ELECTRICAL)			CONTROL	CLOSED/OFF
D	DENSITY OR SPECIFIC GRAVITY	DIFFERENTIAL			DIVERT
E	VOLTAGE		SENSOR (PRIMARY ELEMENT)		
F	FLOW	RATIO (FRACTION)			
G	GAUGING (DIMENSIONAL)		GLASS VIEWING DEVICE		
H	HAND (MANUAL)				HIGH/OPEN/ON
I	CURRENT (ELECTRICAL)		INDICATE		
J	POWER (ELECTRICAL)				
K	TIME, SEQUENTIAL	TIME RATE OF CHARGE			
L	LEVEL		LIGHT		LOW/CLOSED/OFF
M	MOISTURE/HUMIDITY	MOMENTARY			
N	NUMERICAL VALUE		USER'S CHOICE	USER'S CHOICE	USER'S CHOICE
O	YIELD		ORIFICE, RESTRICTION		OPEN/ON
P	PRESSURE, VACUUM		POINT (TEST) CONNECTION		
Q	QUANTITY/NUMBER	INTEGRATE, TOTALIZE			
R	RADIATION/LIGHT/RADIO		RECORD, PRINT		
S	SPEED OR FREQUENCY	SAFETY		SWITCH	
T	TEMPERATURE			TRANSMIT	THROUGH
U	MULTIVARIABLE		MULTIFUNCTION	MULTIFUNCTION	MULTIFUNCTION
V	VISCOSITY, VIBRATION			VALVE, DAMPER, LOUVER	
W	WEIGHT, FORCE		WELL/PROBE		
X	UNCLASSIFIED	X AXIS	UNCLASSIFIED	UNCLASSIFIED	UNCLASSIFIED
Y	EVENT/STATE	Y AXIS		RELAY, COMPUTE, CONVERT NOTE 4	
Z	POSITION	Z AXIS		DRIVER, ACTUATOR UNCLASSIFIED FINAL CONTROL ELEMENT	

HEATING & COOLING ELEMENTS



NOTES:
 1. THE LETTER 'A' IS USED FOR ANALYSIS VARIABLES. THE FOLLOWING TERM IS PLACED OUTSIDE THE INSTRUMENT CIRCLE TO DENOTE THE SPECIFIC VARIABLE.
 CO₂ - CARBON DIOXIDE

ISSUED FOR APPROVAL	BY: GDM	DATE: 07/10/08
GASSNOVA		
CO2 KARSTO PROJECT		
10112936-PB-P-FLD-0002		
SYMBOLS AND LEGENDS		
BECHTEL POWER CORPORATION	DRAWING NO. 25474	REV. 0